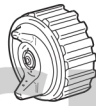


## Nozzle combinations



Paint nozzle

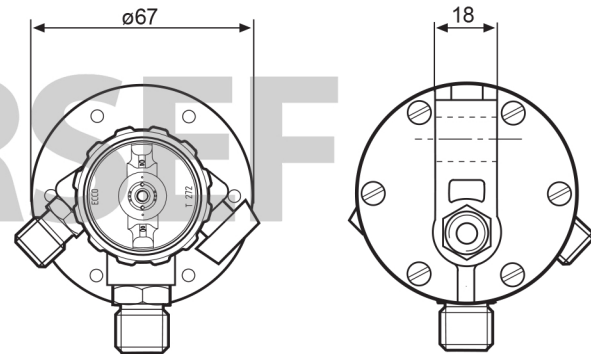
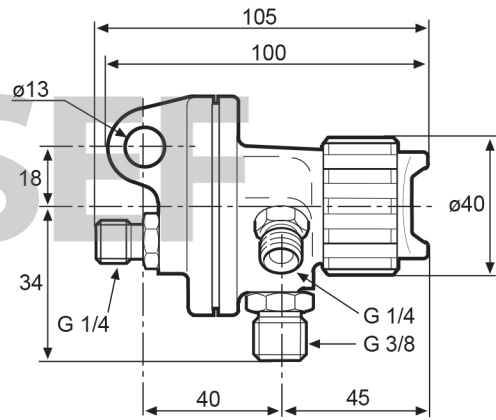


Air cap

Orifice diam. mm	Designation (a)	Part number	Designation	Part number
1.1	09-7	<b>6001 1068 00</b>	T272	<b>6101 2599 00</b>
1.3	{ 1.5-7 H1.5-7 }	<b>6001 0999 00</b> <b>6001 1092 00</b>	T272	<b>6101 2599 00</b>
			T274	<b>6101 2602 00</b>
			275	<b>6101 2590 00</b>
1.5	1.5	<b>6103 1303 00</b>	T272	<b>6101 2599 00</b>
1.8	{ 2-7 H2-7 }	<b>6000 9140 00</b> <b>6001 0768 00</b>	T272	<b>6101 2599 00</b>
			T274	<b>6101 2602 00</b>
			275	<b>6101 2590 00</b>
2.1	{ 3-7 H3-7 }	<b>6000 9141 00</b> <b>6000 9876 00</b>	PT274	<b>6101 5785 00</b>
			375	<b>6101 2591 00</b>
			T374	<b>6101 2603 00</b>
2.7	{ 4-7 H4-7 }	<b>6000 9142 00</b> <b>6000 9877 00</b>	T474	<b>6101 2604 00</b>
			475	<b>6101 2592 00</b>

<sup>a</sup> The letter "H" before the figures (e.g., H2-7) denotes tungsten-carbide design.

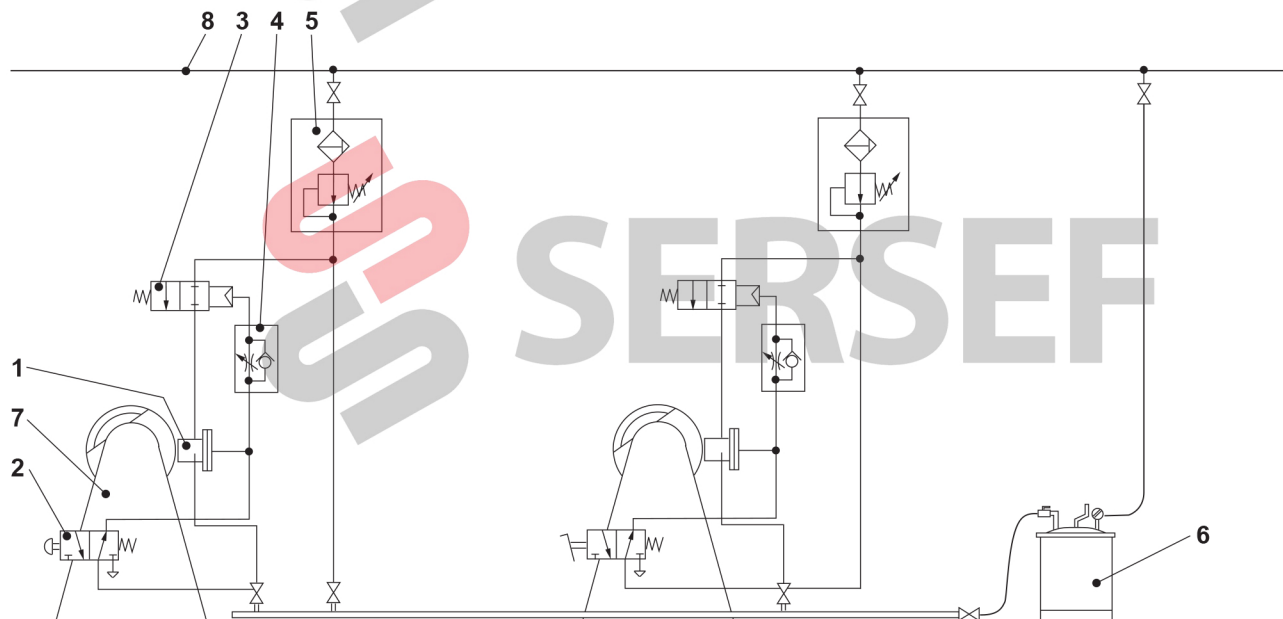
## Ecco 40DA



Dimensions in mm.

65135F107

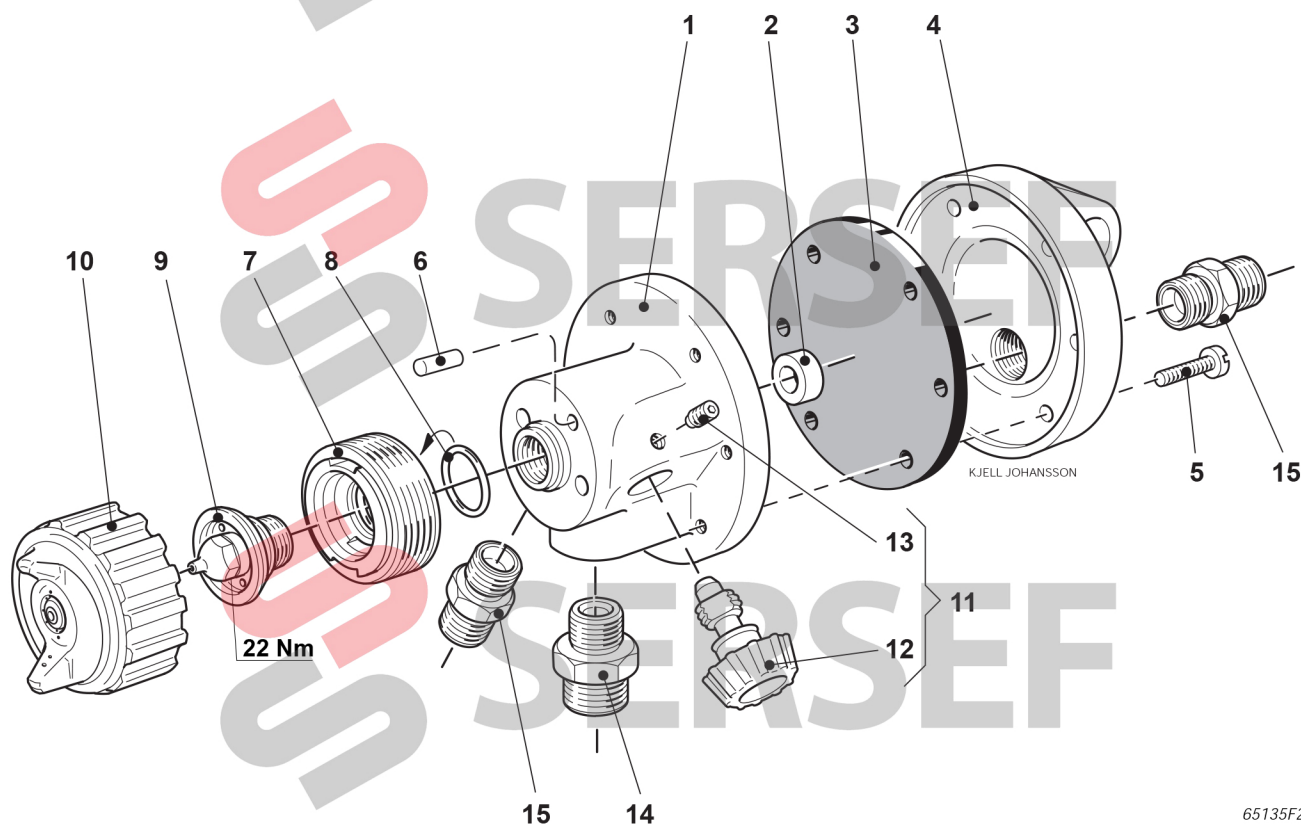
## Spraying of polishing compound with Ecco 40DA



1. Automatic spray gun Ecco 40DA.
2. Manually, electrically or mechanically actuated 3-way valve with return spring, size G 1/8.
3. Air-actuated 2-way valve with spring return, normally open, size G 1/4.
4. Throttle check valve, size 1/8", with a delay of 1.5 2 sec.
5. Air cleaner with reducing valve.
6. Paint pressure feed tank.
7. Polishing machine.
8. Compressed air line.

5942 F137

ECCO 40DA 1.1/T272	.....	Prod. No.	8611 5210 91
ECCO 40DA 1.3/T272	.....	Prod. No.	8611 5210 25
ECCO 40DA 1.3/T274	.....	Prod. No.	8611 5210 33
ECCO 40DA 1.3/275	.....	Prod. No.	8611 5210 90
ECCO 40DA 1.5/T272	.....	Prod. No.	8611 5210 10
ECCO 40DA 1.8/T272	.....	Prod. No.	8611 5210 74
ECCO 40DA 1.8/T274	.....	Prod. No.	8611 5210 66
ECCO 40DA 1.8/275	.....	Prod. No.	8611 5211 24
ECCO 40DA 2.1/T374	.....	Prod. No.	8611 5210 67
ECCO 40DA 2.1/375	.....	Prod. No.	8611 5211 30
ECCO 40DA 2.1/PT274	.....	Prod. No.	8611 5210 70
ECCO 40DA 2.7/T474	.....	Prod. No.	8611 5210 68
ECCO 40DA 2.7/475	.....	Prod. No.	8611 5211 57



65135F24

Part numbers **in bold type** designate consumption parts.

Ref. No.	Part number	Qty	Description	Ref. No.	Part number	Qty	Description
1	6102 2741 00	1	Spray head	9	(see page 2)	1	Paint nozzle
2	6102 2747 00 <sup>a</sup>	1	Seat	10	(see page 2)	1	Air cap
3	<b>6102 2744 00</b>	1	Diaphragm (NBR [Nitrile])	11	<b>6101 5627 00</b>	1	Fan width control, compl.
4	6102 2743 00	1	Cover	12	6001 5670 80	1	- Fan width control
5	0160 6041 00 <sup>a</sup>	6	Screw (MCS 4 x 14 fz)	13	<b>0192 1169 00<sup>a</sup></b>	1	- Screw (T6SS 4 x 8)
6	0101 4131 00	1	Cyl. pin (CP 4h6 x 10 S)	14	6001 2617 00 <sup>a</sup>	1	Nipple (G 1/4 x G 3/8)
7	<b>6102 1214 00</b>	1	Distributing ring, compl.	15	6001 2619 00 <sup>a</sup>	2	Nipple (G 1/4 x G 1/4)
8	<b>6101 1724 00</b>	1	- O-ring (PTFE)				

<sup>a</sup> Loctite 225.