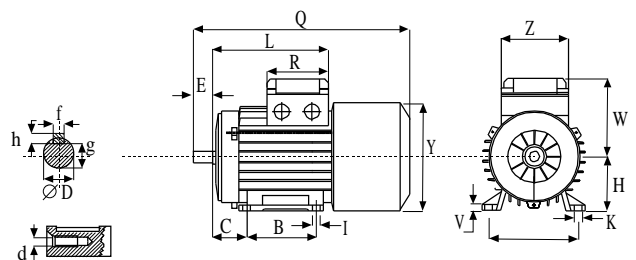


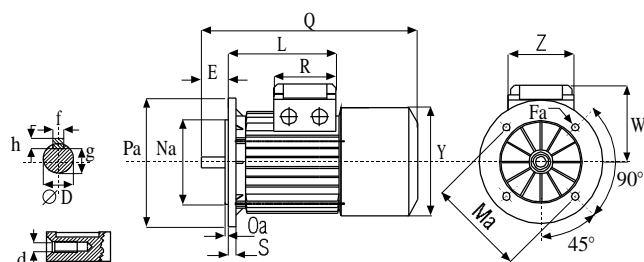
Tipo	56*	63	71	80	90S	90L	100
A	-	100	112	125	140	140	160
B	-	80	90	100	100	125	140
C	-	40	45	50	56	56	63
∅D	9	11	14	19	24	24	28
d	M4	M4	M5	M6	M8	M8	M10
E	20	23	30	40	50	50	60
Fa	-	9.5	9.5	11.5	11.5	11.5	14
Fb	M5	M5	M6	M6	M8	M8	M8
f	3	4	5	6	8	8	8
g	7.2	8.5	11	15.5	20	20	24
H	56	63	71	80	90	90	100
h	3	4	5	6	7	7	7
I	-	7	7	9	10	10	12
K	-	10.5	10.5	14	14	14	15
L	130	130	148	162	171	196	217
L 1	167	167	180	194	207	232	254
∅Ma	-	115	130	165	165	165	215
∅Mb	65	75	85	100	115	115	130
∅Na	-	95	110	130	130	130	180
∅Nb	50	60	70	80	95	95	110
Oa	-	3	3.5	3.5	3.5	3.5	4
Ob	2.5	2.5	2.5	3	3	3	3.5
∅Pa	-	140	160	200	200	200	250
∅Pb	90	90	105	120	140	140	160
Q	257	260	295	334	360	385	435
R	81	81	81	81	98.5	98.5	98.5
R1	135	135	135	135	170	170	170
S	-	10	10	12	12	12	14
V	-	7	8.5	9.5	10.5	10.5	13
W	89	89	102	113	127	127	138
W 1	111	111	120	131	148	148	162
Y	120	120	136	153	178	178	198
Z	75	75	75	75	98.5	98.5	98.5
Z 1	86	86	86	86	112	112	112

\* Solo la forma costruttiva IM B14

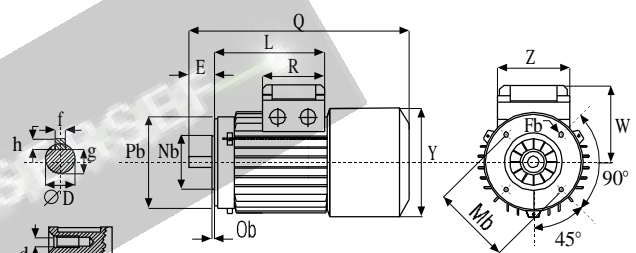
B3



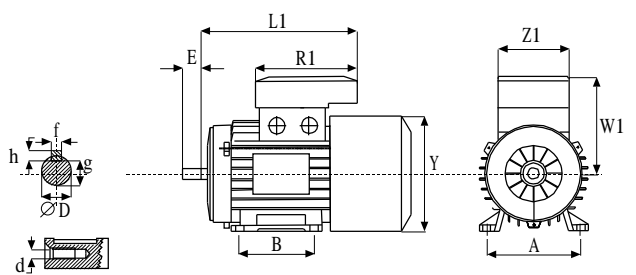
B5



B14



Motore con doppia morsettieria



Note i bocchettoni pressacavo sono PG 16 per i motori BM 71 ÷ 100 e PG 11 per i motori BM63.