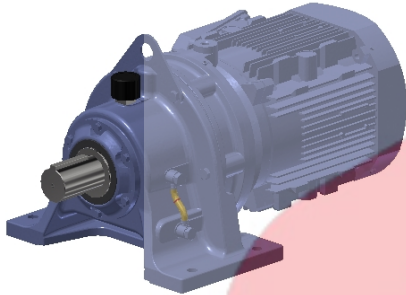


## Product Configuration Technical Specification Sheet

### Cyclo® 6000



Basic Product Information	
Model Number	CHHMS10-6160YC-EP-21
Cyclo® Frame Size	6160
Housing Style	(H) Foot Mount
Shaft Orientation	(H) Horizontal
Output Shaft Specification	(Y) Standard Inch Size
Input Configuration	(M) Integral Motor

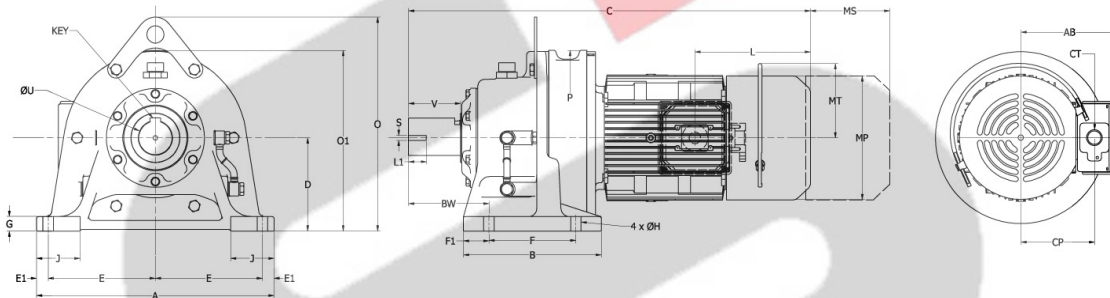
Application Information	
Ratio	21
Input / Output RPM	1750 / 83.3

*NOTE: Information displayed on this technical specification sheet will vary, as it is based upon your actual selections. Please see next page for more configuration specific information.*

Dimensions shown are for reference only and are subject to change without notice, unless certified. Certified prints are available after receipt of an order; consult factory for more information. Image shown is representative and may not reflect actual unit and/or orientation.

## Unmatched Reliability, Exceptional Performance

Cyclo® speed reducers and gearmotors are designed to withstand shock loads exceeding 500% of their ratings



Units: inch Approximate Weight: 318 lb

Casing	A	B	C	D	E	E1	F	F1	G	H	J	O1	O	P	P1	BW
	16.14	9.37	28.27	6.30	7.28	0.79	5.91	1.73	0.98	0.71	2.95	-	14.45	11.81	-	5.47
Output Shaft	U	UTOL.	V	S	L1	KEY										
	2.2500	0 / -0.0007	3.54	3/8-16UNC	0.79	1/2 x 1/2 x 2.95										
Integral Motor	AB	L	MP	MS	MT	CP	CT									
	9.04	5.43	□10.24	-	-	6.99	NPT 1									

## Product Configuration Technical Specification Sheet

Input Configuration		Product Ratings	
Input Stage Frame Size	616	Application or Motor Input Power	10.1 HP
<b>Gearmotor</b>		Service Factor	1.72
Motor Series	EPNA Prem. Eff. UL/CSA	Calculated Output Torque	7230 in-lbs
Motor Frame / Type	N-132M / TEFC	Rated Input RPM	1750
HP x Pole Rating	(10) 10HP [7.5kW] 4P	Rated Output RPM	83.3
Motor Voltage Rating	230/460V, 60Hz, 3Phase	Product Rated Input Power	17.3 HP
Motor Shaft Direction	Horizontal	Product Rated Output Torque	12400 in-lbs
Conduit Box Type	Global Type	Product Overhung Load Capacity	3430 lbf
Inlet Size	NPT 1		
C. Box / Port Direction	N33 / N3B	Reducer Options	
Add Brake	No	Mill Duty	Option Not Selected
		Chemical Duty	Option Not Selected
		<b>Dusty, Weather Proof IP54</b>	Option Not Selected
		<b>Food &amp; Washdown Options</b>	None Selected
		<b>Ductile Iron Housing</b>	Option Not Selected
		<b>High Capacity Bearing</b>	Option Not Selected
		<b>Shoulder Bolts / Dowel Pins</b>	Option Not Selected
		<b>Eccentric Backlash Reduction</b>	Not Selected
		<b>Severe Duty Breather</b>	Add Option
		<b>Glass Sight Oil Gauge</b>	Option Not Selected
		<b>Magnetic Drain Plug</b>	Not Selected
		<b>Drain Valve</b>	Not Selected
		<b>Drain Type</b>	Standard Drain Plug
		<b>Seal Options</b>	Nitrile Seal
		<b>Double Output Oil Seals</b>	Option Not Selected
		<b>Paint Specification</b>	Standard Paint

Lubrication Specifications	
Lubrication Requirement	Standard Lubrication
Lubrication Method	Oil Bath
Lubrication Option	NO OIL (customer to fill)

Environmental Specifications	
Installation Location	Indoor
Ambient Temperature	14° - 104°F (-10° - 40°C )
Ambient Humidity	Under 90%
Environment	Standard
Food Grade Required	No
Elevation Above Sea Level	Under 3300 ft/1000 m

Configuration Messages	
<b>Output Shaft Overhung Load (OHL) Capacity</b>	
The Output Shaft OHL Capacity needs to be checked if Output Shaft is not direct coupled to the application. Using the Product Overhung Load Capacity value from the Selection, please check it against the actual OHL using the method described in the Catalog. If Cyclo unit will see significant vibration from the application and the Cyclo output shaft will not be direct coupled to the application, please consult the Factory for additional guidelines on Service Factor adjustment.	

All Configuration data contained within this technical specification sheet is subject to change. Please refer to Sumitomo Drive Technologies' Terms and Conditions located at [smcyclo.com](http://smcyclo.com) for further information. For more specific product and/or application data, please contact your Sumitomo Drive Technologies' Representative.

**To request a catalog, or for more information, on any of our high quality products, please visit our website: [www.sumitomodrive.com](http://www.sumitomodrive.com).**

*Thank you for your interest in Sumitomo products.*