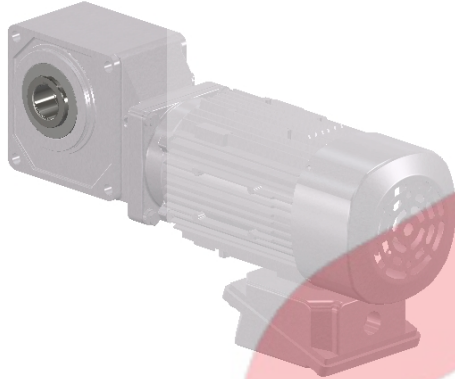


Product Configuration Technical Specification Sheet

Hyponic®



Basic Hyponic® Product Information

Model	RNYM05-1220YA-B-15
Hyponic® Frame Size	1220
Housing Style	(Y) Hollow Shaft
Output Shaft Orientation	(N) Universal
Input Configuration	(M) Integral Gearmotor
Shaft Option	Keyed Hollow Bore
Shaft Specification	Inch Shaft: Ø 1 in

Configuration Rating Information

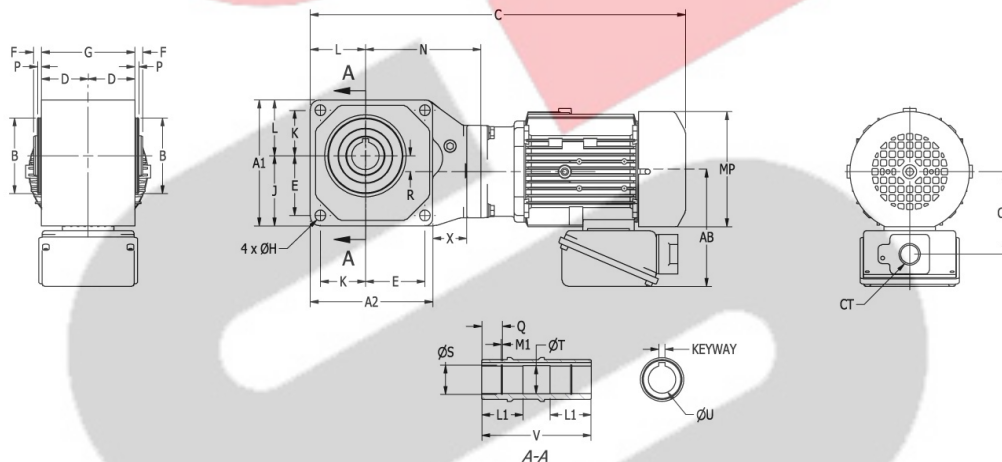
Nominal Ratio	15
Input / Output RPM	1750 / 117

NOTE: Information displayed on this technical specification sheet will vary, as it is based upon your actual selections. Please see next page for more configuration specific information.

Dimensions shown are for reference only and are subject to change without notice, unless certified. Certified prints are available after receipt of an order; consult factory for more information. Image shown is representative and may not reflect actual unit and/or orientation.

Quiet, Compact and Maintenance-Free

All-steel hypoid gear design transmits torque more efficiently for more torque density in a compact unit



Units: inch Approximate Weight: 25 lb

Hyponic Casing	A1	A2	B	B TOL	D	E	F	G	H	J	K	L	N	P	R	X
	4.53	4.45	3.0709	0 / -0.0012	1.46	2.24	0.35	2.91	0.35	2.60	1.57	1.93	3.78	0.20	1.10	0.79

Keyed Hollow Bore	U	U TOL	V	S	L1	Q	M1	T	KEYWAY
	1.0000	+0.0013 / +0.0005	3.62	1.07	1.50	0.8661	0.0461	1.02	0.25

Integral Motor	AB	C	MP	CP	CT
	4.63	15.16	Ø4.89	3.29	NPT 1/2

Product Configuration Technical Specification Sheet

Input Configuration		Product Ratings	
Input Stage Frame Size	GN111A (10E) - Size 10, Hypoid Ratio 5:1	Application or Motor Input Power	0.5 HP
Gearmotor		Service Factor	1.07
Motor Series	Standard US / Mexico	Calculated Output Torque	230 in-lbs
Motor Frame / Type	V-71M / TEFC	Rated Input RPM	1750
HP x Pole Rating	(05) 1/2HP [0.4kW] 4P	Rated Output RPM	117
Motor Voltage Rating	230/460V, 60Hz, 3Phase	Product Rated Input Power	0.536 HP
Conduit Box Type	Global Type	Product Rated Output Torque	246 in-lbs
Inlet Size	NPT 1/2	Product Overhung Load Capacity	265 lbf
C. Box / Port Direction	N36 / N3B	Actual Reduction Ratio	45/9*58/19 = 15.2632
Brake Model / Torque	FB-05A / 4.0 N-m (3.0 ft-lbs)	Reducer Options	
Brake Voltage	230/460V, 60Hz, 1Phase	Safety Cover	Included
Brake Release	No	Chemical Duty	Option Not Selected
		Food & Washdown Options	None Selected
		Seal Options	Nitrile Seal
		Paint Specification	Silver Powder Coat
Lubrication Specifications			
Selected Lubrication	Standard Lubrication		
Lubrication Method	Grease		
Lubrication Option	Standard Grease		
Environmental Specifications			
Installation Location	Indoor		
Ambient Temperature	14° - 104°F (-10° - 40°C)		
Ambient Humidity	Under 90%		
Environment	Standard		
Food Grade Required	No		
Elevation Above Sea Level	Under 3300 ft/1000 m		
Configuration Messages			
Recommended Driven Shaft Tolerance - Keyed Hollow Bore			
Recommended dimensional tolerance of the driven shaft is as follows:			
For uniform load - ISO/JIS/DIN h6 or js6			
For shock load, or significant radial load - ISO/JIS/DIN js6 or k6			

All Configuration data contained within this technical specification sheet is subject to change. Please refer to Sumitomo Drive Technologies' Terms and Conditions located at smcyclo.com for further information. For more specific product and/or application data, please contact your Sumitomo Drive Technologies' Representative.

To request a catalog, or for more information, on any of our high quality products, please visit our website: www.sumitomodrive.com.

Thank you for your interest in Sumitomo products.