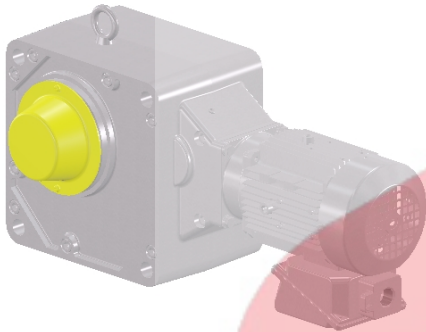


## Product Configuration Technical Specification Sheet

# Hyponic®



Basic Product Information	
Model Number	RNYMS05-1640YC-AV-300
Hyponic Frame Size	1640
Housing Style	(Y) Hollow Shaft
Output Shaft Orientation	(N) Universal
Output Shaft	Keyed Hollow Bore: $\varnothing$ 1-1/2 in
Input Configuration	(M) Integral Gearmotor

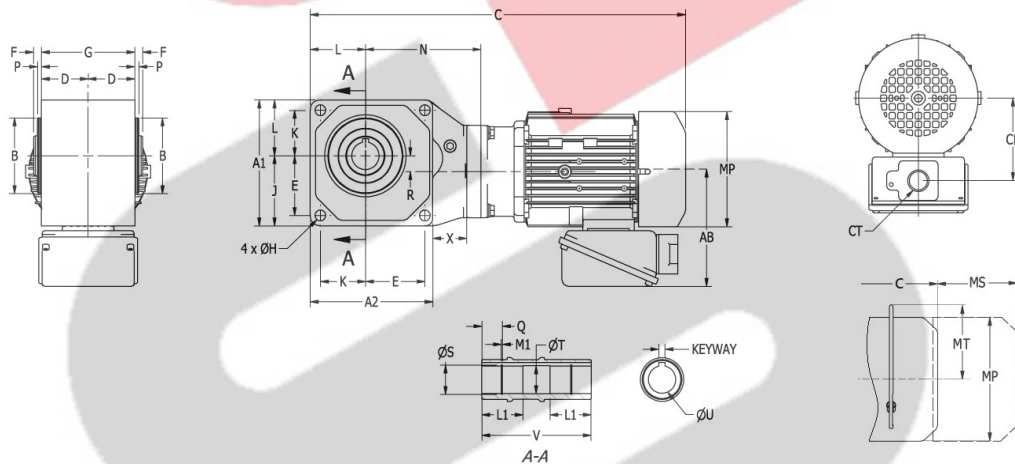
Application Information	
Nominal Ratio	300
Input / Output RPM	1750 / 5.83

*NOTE: Information displayed on this technical specification sheet will vary, as it is based upon your actual selections. Please see next page for more configuration specific information.*

Dimensions shown are for reference only and are subject to change without notice, unless certified. Certified prints are available after receipt of an order; consult factory for more information. Image shown is representative and may not reflect actual unit and/or orientation.

## Quiet, Compact and Maintenance-Free

All-steel hypoid gear design transmits torque more efficiently for more torque density in a compact unit



Units: inch    Approx. Weight 143 lb

Casing	A1	A2	B	B TOL	D	E	F	G	H	J	K	L	N	P	R	X
	11.02	11.02	5.9055	0 / -0.0016	3.66	5.71	0.75	7.32	0.87	6.69	3.35	4.33	9.29	0.47	0.67	-

Keyed Hollow Bore	U	U TOL	V	S	L1	Q	M1	T	KEYWAY
	1.5000	+0.0015 / +0.0006	8.82	1.594	2.28	1.0236	0.0559	1.524	0.375

Integral Motor	AB	C	MP	MS	MT	CP	CT
	5.66	23.78	$\varnothing$ 5.95	-	-	4.07	NPT 3/4

## Product Configuration Technical Specification Sheet

Input Configuration		Product Ratings	
<b>Input Stage Frame Size</b>	GN131C (30K) - Size 30, Hypoid Ratio 10:1	<b>Application or Motor Input Power</b>	0.5 HP
<b>Gearmotor</b>		<b>Service Factor</b>	2.14
<b>Motor Series</b>	AF-Motor US / Mexico	<b>Calculated Output Torque</b>	4320 in-lbs
<b>Motor Frame / Type</b>	VA-71M / TEFC	<b>Rated Input RPM</b>	1750
<b>HP x Pole Rating</b>	(05) 1/2HP [0.4kW] 4P	<b>Rated Output RPM</b>	5.83
<b>Motor Voltage Rating</b>	230/460V, 60Hz, 3Phase	<b>Product Rated Input Power</b>	1.07 HP
<b>Conduit Box Type</b>	Global Type	<b>Product Rated Output Torque</b>	9270 in-lbs
<b>Inlet Size</b>	NPT 3/4	<b>Product Overhung Load Capacity</b>	2210 lbf
<b>C. Box / Port Direction</b>	N36 / N3B	<b>Actual Reduction Ratio</b>	60/6*52/15*53/18*59/20 = 297.6826
<b>Add Brake</b>	No		

Lubrication Specifications	
<b>Selected Lubrication</b>	Standard Lubrication
<b>Lubrication Method</b>	Grease
<b>Lubrication Option</b>	Standard Grease

Environmental Specifications	
<b>Installation Location</b>	Indoor
<b>Ambient Temperature</b>	14° - 104°F (-10° - 40°C )
<b>Ambient Humidity</b>	Under 90%
<b>Environment</b>	Standard
<b>Food Grade Required</b>	No
<b>Elevation Above Sea Level</b>	Under 3300 ft/1000 m

Reducer Options	
<b>Torque Arm</b>	Not Selected
<b>Safety Cover</b>	Included
<b>Chemical Duty</b>	Option Not Selected
<b>Food &amp; Washdown Options</b>	None Selected
<b>Seal Options</b>	Nitrile Seal
<b>Paint Specification</b>	Silver Powder Coat

Configuration Messages	
<b>Recommended Driven Shaft Tolerance - Keyed Hollow Bore</b>	
Recommended dimensional tolerance of the driven shaft is as follows:	
For uniform load - ISO/JIS/DIN h6 or js6	
For shock load, or significant radial load - ISO/JIS/DIN js6 or k6	

All Configuration data contained within this technical specification sheet is subject to change. Please refer to Sumitomo Drive Technologies' Terms and Conditions located at [smcyclo.com](http://smcyclo.com) for further information. For more specific product and/or application data, please contact your Sumitomo Drive Technologies' Representative.

To request a catalog, or for more information, on any of our high quality products, please visit our website: [www.sumitomodrive.com](http://www.sumitomodrive.com).

*Thank you for your interest in Sumitomo products.*