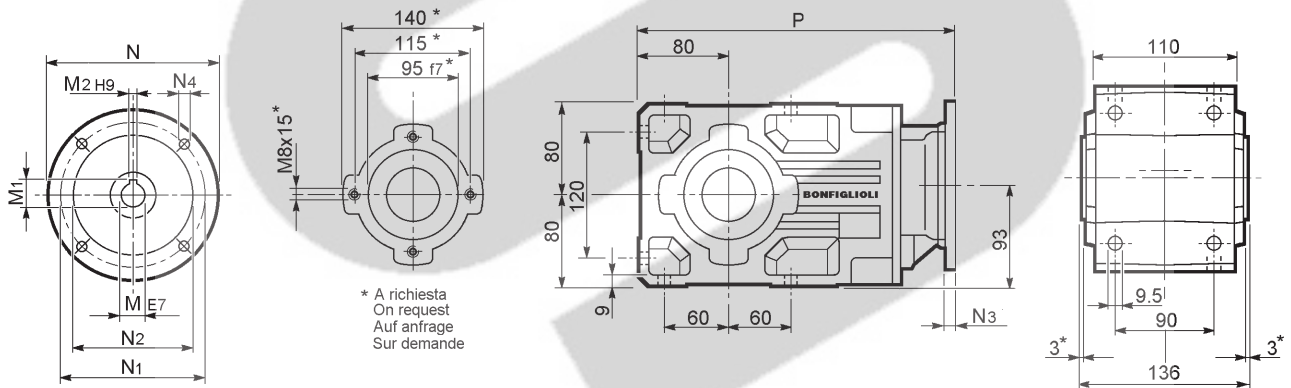


* A richiesta
On request
Auf anfrage
Sur demande

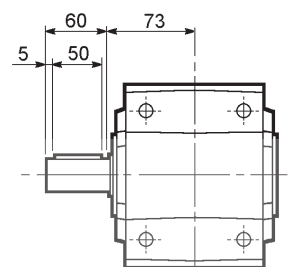
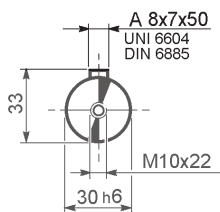
NR-ND-NH UR-UD-UH-US	A 202									
	M	M ₁	M ₂	N	N ₁	N ₂	N ₃	N ₄	P	Kg
A 202_P 63	11	12.8	4	140	115	95	—	M8x19	306	11.9
A 202_P 71	14	16.3	5	160	130	110	—	M8x16	306	12.1
A 202_P 80	19	21.8	6	200	165	130	—	M10x12	325	12.9
A 202_P 90	24	27.3	8	200	165	130	—	M10x12	325	12.9
A 202_P 100	28	31.3	8	250	215	180	—	M12x16	335	16.9
A 202_P 112	28	31.3	8	250	215	180	—	M12x16	335	16.9



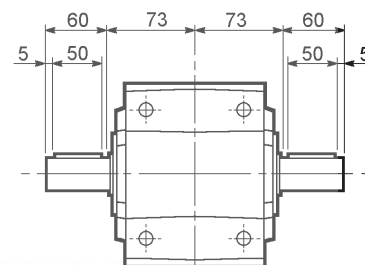
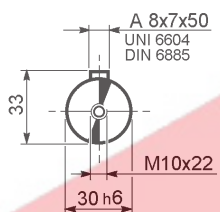
* A richiesta
On request
Auf anfrage
Sur demande

NR-ND-NH UR-UD-UH-US	A 203									
	M	M ₁	M ₂	N	N ₁	N ₂	N ₃	N ₄	P	Kg
A 203_P 63	11	12.8	4	140	115	95	—	M8x19	361	12.9
A 203_P 71	14	16.3	5	160	130	110	—	M8x16	361	13.0
A 203_P 80	19	21.8	6	200	165	130	—	M10x12	381	13.7
A 203_P 90	24	27.3	8	200	165	130	—	M10x12	381	13.6
A 203_P 100	28	31.3	8	250	215	180	—	M12x16	391	17.6
A 203_P 112	28	31.3	8	250	215	180	—	M12x16	391	17.6

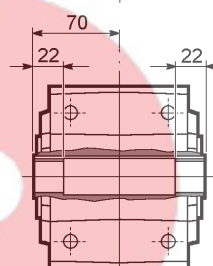
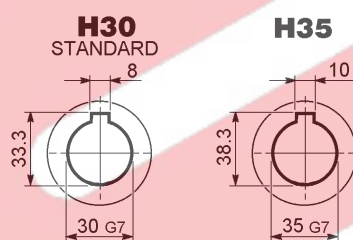
A 20...NR
A 20...UR



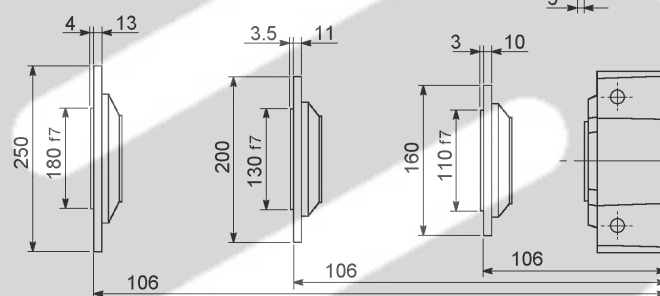
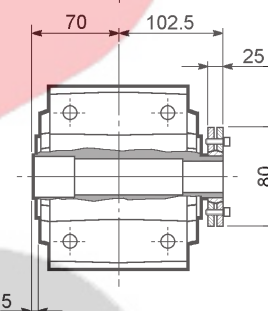
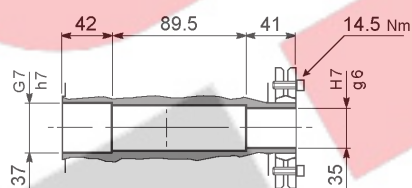
A 20...ND
A 20...UD



A 20...NH
A 20...UH



A 20...US



A 20...F...

